

# USB Skype Diverter

## User Manual



**Divert calls between Skype and PSTN**

## **1 Instruction**

### **1.1 Summary**

While you are out, the USB Skype Diverter will divert all incoming Skype calls to your mobile phone, and it'll divert your PSTN calls to Skype, you can make calls to Skype contacts and make calls to any phone all over the world via SkypeOut by your mobile phone. You can take advantage of Skype and SkypeOut anywhere and anytime.

### **1.2 Features**

1. Support “Call divert” function (Skype divert to PSTN and PSTN divert to Skype)
2. PSTN Voice Mail function
3. Send/Receive both Skype calls and regular PSTN calls
4. Phone rings for all incoming Skype and PSTN calls
5. Sound card not needed, echo cancellation, noise reduction

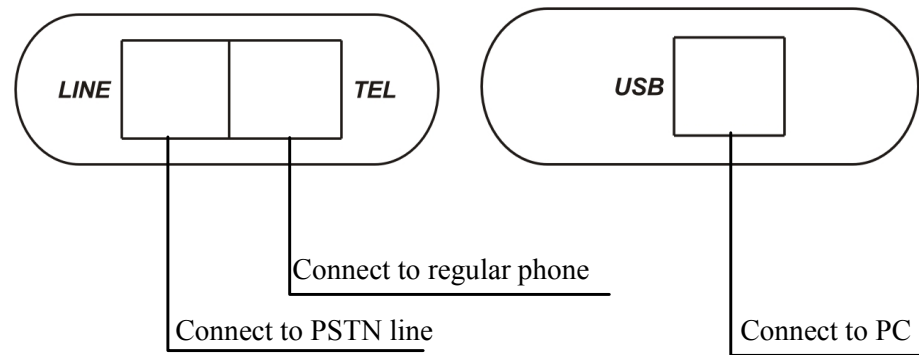
### **1.3 System Requirements**

1. Windows 2000 or XP
2. 400MHz processor and free USB1.1 or USB2.0 port
3. 128MB RAM and 15MB free disk space
4. Any broadband connection or minimum 33.6 Kbps dialup

## 1.4 Package Contents

1. One USB Skype Diverter
2. One USB Cable
3. One Telephone Cord
4. One User Manual
5. One Installation CD

## **2 Physical Features**



## **3 USB Skype Diverter Installation**

### 3.1 Install the Skype Software

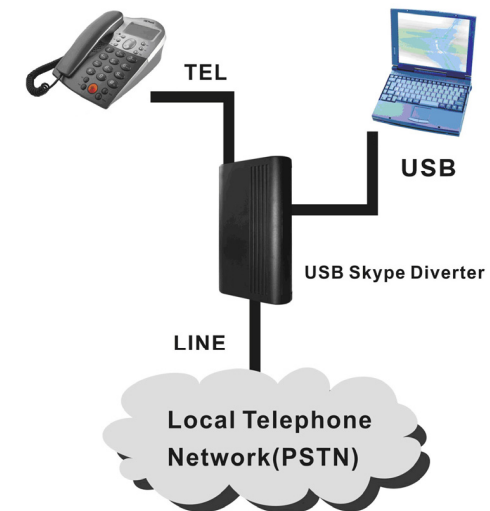
Note: If you have previously installed the Skype software, proceed to **3.2**

- (1) Insert your Installation CD-ROM into the CD-ROM drive of your computer.
- (2) Click **Install Skype software**. You must have a connection to the Internet since you will need to download this software

from the Skype Website. Follow the on-screen instructions to install and launch the Skype software.

- (3) After downloading the software, you will need to create a Skype account. Follow the on-screen instructions.

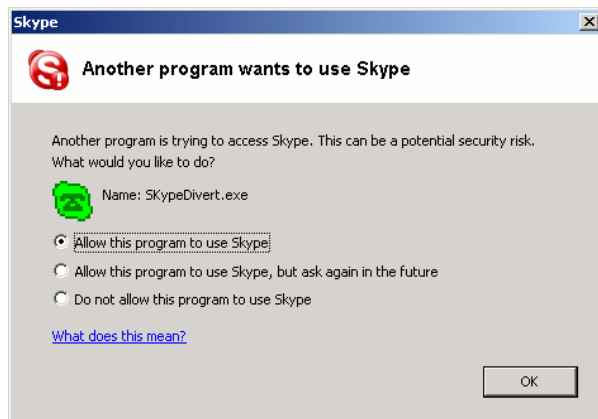
### 3.2 Connect your USB Skype Diverter



- (1) Connect the USB Skype Diverter to an available USB port on your computer with the USB Cable
- (2) Connect the USB Skype Diverter to the PSTN line
- (3) Connect a telephone set to the USB Skype Diverter with the telephone cord
- (4) When the POWER and PSTN indicators are activated, that indicates the USB Skype Diverter is connected successfully.


### 3.3 Install SkypeMate Software

- (1) Insert your Installation CD-ROM into the CD-ROM drive of your computer.
- (2) Click **Install SkypeMate software**. Follow the on-screen instructions to install the USB Skype Diverter software.
- (3) After installing the software, you will be prompted that another program wants to use Skype. Select **Allow this program to use Skype** and click OK.



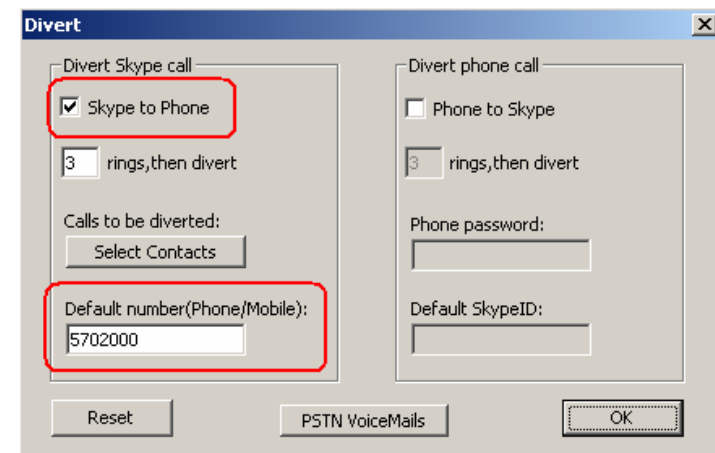
## 4 Basic Function

### 4.1 Skype Divert to PSTN

- (1) Right click the icon  on the taskbar and select **Divert**.




- (2) The window shown as below:



- (3) Select **Skype to Phone** to enable the function.
- (4) Set the phone number you would like to divert, in the **Default number** box. e.g, domestic 5702000, international 00865925702000
- (5) Test the function by doing following steps:

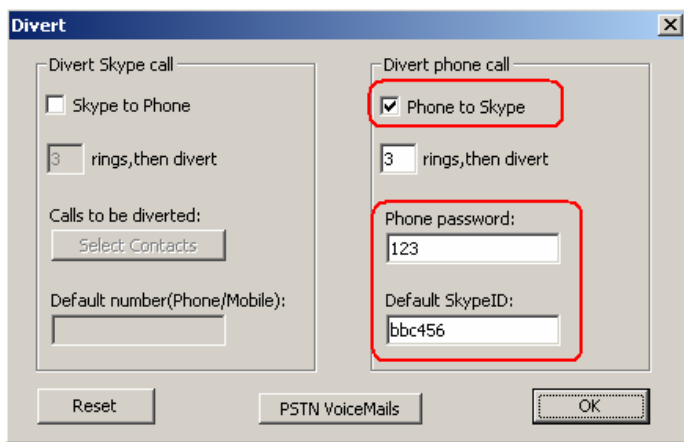
- (6) Call in from Skype, the phone rings
- (7) After 3 rings, all 3 indicators are activated and forward the call to diverted number

## 4.2 PSTN Divert to Skype

- (1) Right click the icon  on the taskbar and select **Divert**



- (2) The window shown as below:



- (3) Select **Phone to Skype** to enable this function
- (4) Set password (Optional) in the **Phone password** box. e.g.: 123 (minimum 1 maximum 6)
- (5) Set **Default SkypeID**  
Set the Skype ID or speed dials (Optional) you want to divert in the **Default SkypeID** box, e.g. bbc456.
- (6) Test the function by doing following steps
  - 1) Call the PSTN line which is connected to your USB Skype Diverter from your mobile phone, and then the phone is ringing.
  - 2) After 3 rings, all 3 indicators are activated. A voice message can be heard through the mobile phone.
  - 3) Enter your password followed by #(eg:123#) to select the divert function.
  - 4) The call will be diverted to “bbc456” directly.

## 4.3 Make PSTN/Mobile Calls

Dial the phone number when the “LINE” indicator is on.

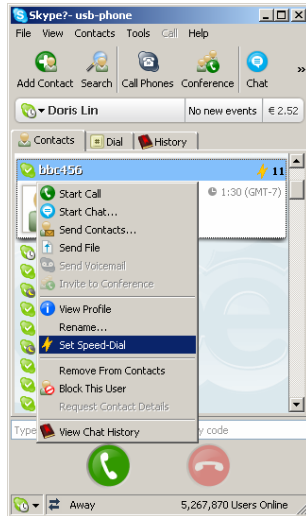
## 4.4 Make Skype Calls

- (1) You will need to have a list of contacts in Skype first. In Skype, click **Add a contact** and follow the on-screen instructions to add a new contact.

(2) Setup the speed-dial function

- 1) Right click on contact.
- 2) Click **Assign Speed-Dial**.
- 3) Enter a speed-dial, e.g 11, for the selected contact and click

OK.



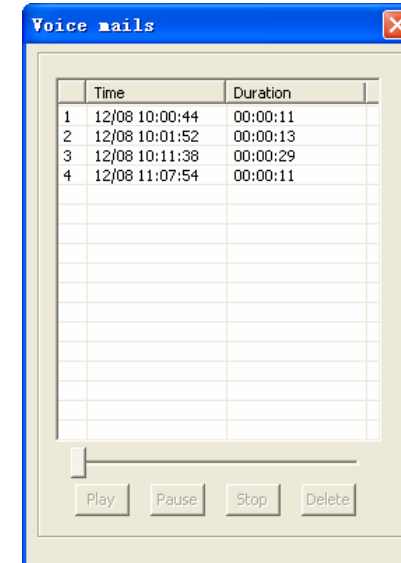
(3) When you call your contact, enter the speed-dial number and press #.

### **4.5 Answer a call**

The phone connected to the USB Skype Diverter will ring for all incoming Skype and PSTN calls. The corresponding indicator will be activated. Pick up the handset or press the Hands Free key to answer the call.

### **4.6 Review PSTN Voicemails**

Open the **Divert** window. Click **PSTN VoiceMails** button to check the Voicemail list. Select one of the Voicemail and click **Play**.



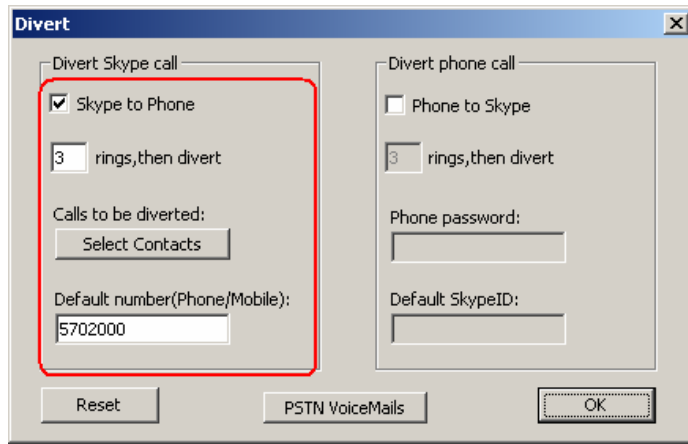
The Voicemail will be played through the default audio device of Windows. To change the default audio device please do following steps:

- (1) Click Windows **Start**, **Control Panel**, double-click **Sounds and Audio Devices**.
- (2) Click on **Audio** and select your primary audio device

## 5 Advanced setting

### 5.1 Set Skype to Phone Divert features

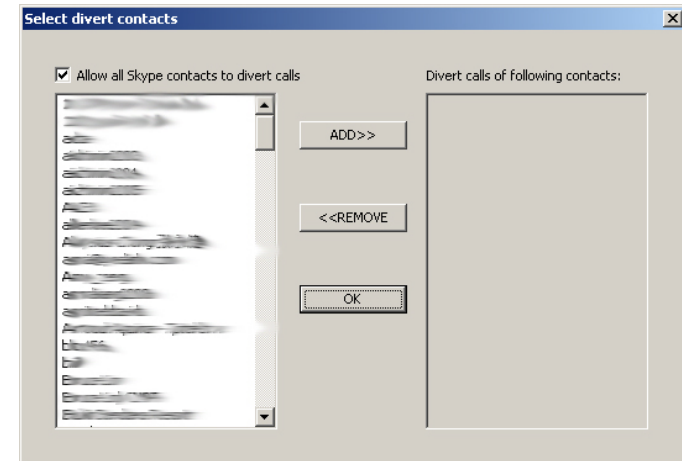
Open the **Divert** window, there are 4 relative features, see below:



- (1) **Skype to Phone:** Select to enables the **Skype to Phone** function, cancel to disable the function.
- (2) **rings, then divert:** How many rings before diverted.
- (3) **Default number:** If a phone number is set here, the incoming call will be diverted to this phone always. It can be a PSTN phone number or your mobile phone number.

If the Divert to box is left blank, you can place call to any phone number when hear the dial tone or see the message, “I am out, call me later”

- (4) **Select Contacts:** Click **Select Contacts** button to open the window, see below:



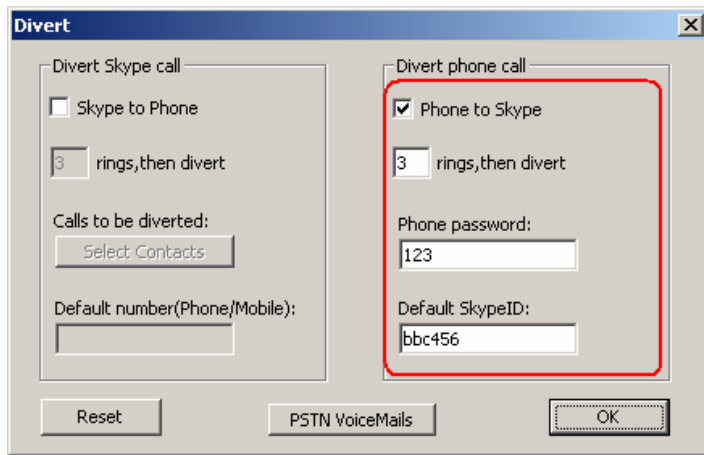
There are two boxes: the right one and the left one. The left one displays all your contacts. The right one lists the contacts calls that will be diverted.

You may add contacts from the left box to the right box or remove contacts from the right box.

**Note:** The default setup is allowing all contact calls to be diverted.


### 5.2 Set Phone to Skype divert features

Open the **Divert** window. There are 4 features relative to the **Phone to Skype** divert function, see below:



- (1) **Phone to Skype:** Select to enables the **Phone to Skype** function, cancel to disable the function.
- (2) **rings, then divert:** How many rings before playing Voice message.
- (3) **Phone password:** Use for ID confirmed. The call will be diverted if you enter the correct password. If it is left blank, it won't play voice message, but divert the SkypeID directly.
- (4) **Default SkypeID:** If a SkypeID is set here, after input the password and press "#", it will be called out. If this box is left blank, after input the password, you can press the speed dial then press "#" to call out.

### 5.3 Normally Setup

Right-click the SkypeMate icon  and click **Advanced**. This will open **Advanced** window. In this window you can configure the following options:

- (1) Select or cancel the option **Run when Windows starts** feature. If you select this feature, the software will be launched automatically when your computer startup.
  - (2) Select or cancel the option **Display Skype windows when calling**. If you select this feature, Skype window will appear when you off hook.
  - (3) Select or cancel the option **When using Skype, set PSTN line to busy**. If you select this feature, you can't use PSTN line when you are talking on Skype line.
  - (4) Select or cancel the option **Refuse Skype call when Skype talking**. If you select this feature, the second Skype incoming call will be refused.
  - (5) Choose PSTN or USB channel as the default channel.
  - (6) Choose one of the Caller ID format "NONE", "FSK", "DTMF" as default.
- When you finish adjusting these settings, click **OK** for the changes to take effect.

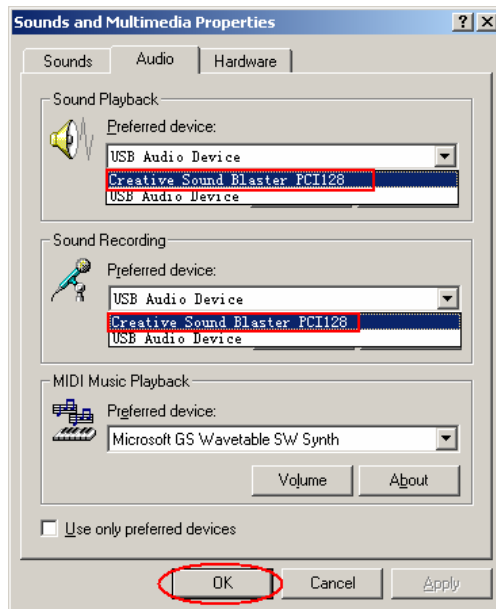
## 6 FAQ

### Problem 1

I am not able to hear any sound through the earphone?

### Solution

Please execute the “Control Panel->Sound and Video (🔊)  
->Audio”, set **Sound Playback** and **Sound Recording**’s  
preference device to your sound card. See below:

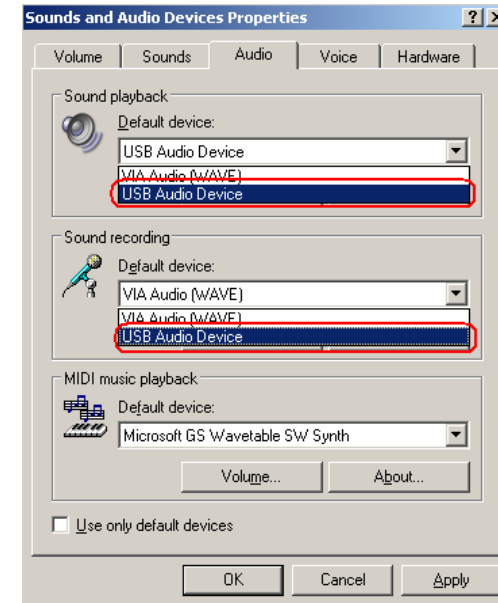


### Problem 2

I can't play music through the USB Skype Diverter?

### Solution

Please execute the “Control Panel->Sound and Video (🔊)  
->Audio”, set **Sound Playback** and **Sound Recording**’s  
preference device to “USB Audio Device”.



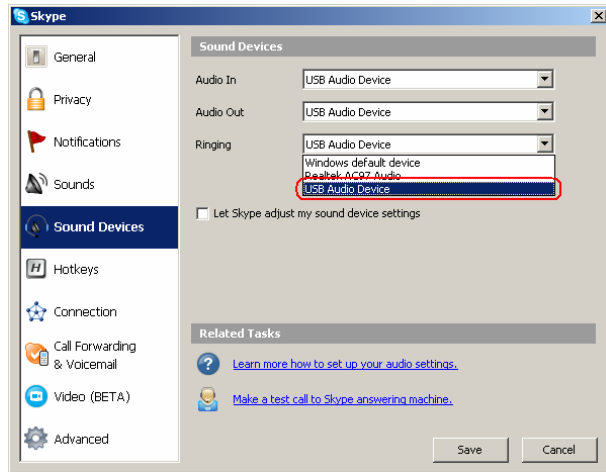
### Problem 3

The voice is played from the PC's sound card instead of the  
USB Skype Diverter when I make/answer a call?

### Solution


Execute “Tools->Options->Sound Devices” to open the  
window as below:





Set “Audio In” and “Audio Out” to “USB Audio Device”.

## **Problem 4**

Skype is running, but the icon of SkypeMate still show as  (the phone is green and the outside is grey)?

## **Solution**

You have selected the wrong option, go to Skype, execute choose “Tools-> Options-> Privacy-> “Manage other programs’ access to Skype”, choose the needed option, click “Change” button to open the “Manage API Access Control” windows, and make another selection.

Y-B3G-Ver.1.3

2006-5-26