

USB Phone

User Manual



Large graphic LCD Blue back light

1 Instruction

1.1 Summary

Plug into your computer's USB port, you can make and receive Skype calls. Phone rings for all incoming calls, dial Skype contacts and SkypeOut numbers from the phone. With large graphic LCD, keypad and ringer, it is easy to use it just as mobile phone.

1.2 Features

1. Large graphic LCD, backlight
2. Dial Skype contacts (speed dial number) and SkypeOut number by phone keypads
3. Phone rings for all incoming calls, ring style selectable by phone keys
4. Caller ID function for Skype calls, support multi-language display.
5. Easy to review Skype contacts and call list on LCD
6. Echo cancellation, noise reduction, full duplex communication

1.3 System Requirements

1. Windows 2000 or XP
2. 400MHz processor and free USB1.1 or USB2.0 port
3. 128MB RAM and 15MB free disk space
4. Any broadband connection or minimum 33.6 Kbps dialup

1.4 Package Contents

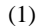


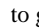
1. One USB Skype Phone
2. One user manual
3. One installation CD

2 Using the USB Skype Phone

2.1 Keypad Instruction




: Contacts

- (1) Press  to display the contacts list, press  to scroll the contacts list.
- (2) Press  to call out the friend displayed on the LCD.
- (3) Press  to go back to idle.
- (4) The contacts are sorted by name. Press e.g. 5 and you will see all contacts starting with "J" press the 5 a second time and you see

all contacts starting with "K"



- C:**
- (1) Press to clear any numbers you have entered for a call.
 - (2) Press to switch between the Tabs of the Skype software.
 - (3) During a call you can press "C" to enable mute, press "C" again to disable mute

: Up/Down

Press  to scroll call/contact list and to adjust volume when talking.

: Dial/Answer

- (1) Call out or answer a call.

- (2) Press  to put call on hold, release call by pressing 

: Hang up

- (1) Hang up a call or refuse incoming call.
- (2) Press the key to go back to previous menu.

***+:** Press to input "+" at idle state, else input "*".

#🎵: Press to scroll ringer style at idle state, else input "#".

0-9: digital keys

- (1) Press to input digital numbers.
- (2) Press to send DTMF message while talking.

2.2 Run Skype

- (1) Download Skype software and install it (www.skype-phone.net). The version must be 1.0.0.106 or higher.
- (2) Run Skype and log in with Skype account.

You can create a Skype account as shown below:






After software startup, the icon will appear to the system tray shown below: 3



That indicates the Skype are successfully connected to Internet.

If the icon is shown as a grey speech bubble, you have to check your Internet connection.


2.3 Connect USB Skype Phone to PC

When USB Skype Phone is connected to PC, the LCD shows as   

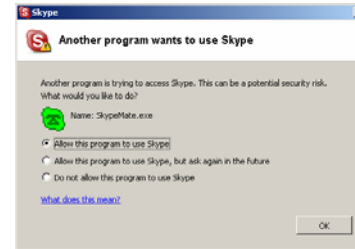
2.4 Run SkypeMate

(1) Insert SkypeMate installation CD or download SkypeMate software from www.skype-phone.net, then install it.

(2) Run SkypeMate

Double-click the icon  on the desktop, the Skype program will pop up the window as shown below:

4




Select the first option “Allow this program to use Skype”, click “OK” button.


Note: If you selected the wrong option, you can make another selection. Please see **2.9. FAQ /problem4** for detail.

After running SkypeMate, the icon will appear to the system tray as shown:



That indicates the device and Skype are connected successfully.

If the icon shown as  (the phone is green and the outside is grey), please run Skype first.




If the icon shown as  (the phone is red and the outside is green), it means USB Skype Phone connected incorrectly.

Please reconnect USB Skype Phone to PC.



2.5 Make a Call

2.5.1 Call Skype user from contacts

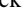

5

- (1) Press  to display contacts.
- (2) Press  to select a contact.
- (3) Press  to call out.

2.5.2 Call Skype user from PC Contacts

- (1) Go back to idle, press “C” to switch Skype software to “Contacts” Tab.
- (2) Press  to select a contact.
- (3) Press  to call out.

2.5.3 Call Skype user from call list

- (1) Go back to idle, press  to display the call list.
- (2) Press  again to select a contact.

- (3) Press  to call out.

2.5.4 Call Skype user by Speed-Dial

- (1) Add a friend (for example: bbc456) to Contacts
- (2) Assign Speed-Dial for it, example "11"

6




- (3) Input number and call out:

Press digital "11" on USB Skype Phone, then press  to call out.

2.5.5 Call to regular phone

Press "00" + "country number" + "phone number", then press





Example: call someone in Beijing, China, please press 00861012345678, and then press 

0086	10	12345678
-----	-----	-----
country code	city code	destination number

- Note:** (1) You can input “+” instead of “00”.
(2) If you want to use this function, you should buy SkypeOut Credit from www.skype.com first.

2.6 Answer a call

When a call comes in, USB Skype Phone will ring. Press  7 answer the call, or press  to refuse it.

2.7 State Instruction

(1) Idle state

a. Skype online b. Skype offline c. Missed call



(2) The icons display in call list

a. Incoming call b. Outgoing call c. Missed call



(3) The icons display in contacts

a. Online




b. Offline

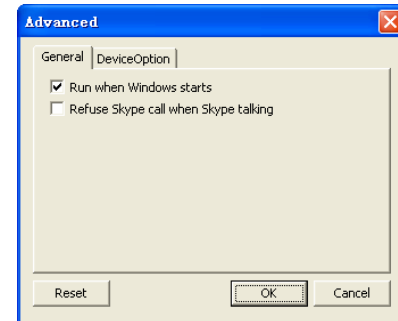


c. SkypeOut



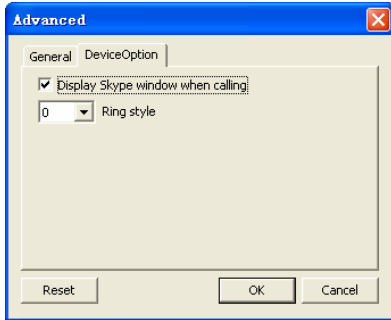
2.8 Advanced setting

- (1) Right click the icon  on the taskbar and select **Advanced**
(2) The window is shown as below:



- (3) **Run when Windows starts:** Select to enable this feature. The SkypeMate will be launched automatically when Windows starts.

- (4) **Refuse Skype call when Skype talking:** Select to enable this feature. The second incoming Skype call will be refused when talking.



9

- (5) **Display Skype window when calling:** If you cancel this option, when you press the digital keys 0-9, *, #, the Skype windows will not pop up (except incoming call and outgoing call).
- (6) **Ring style:** They are 10 types of incoming ring (0-9). You can press “#” on USB Skype Phone to select it when the

phone is at ready state. You can select it in “Advanced” windows too.

- (7) Click the button “**OK**” to save the setup.

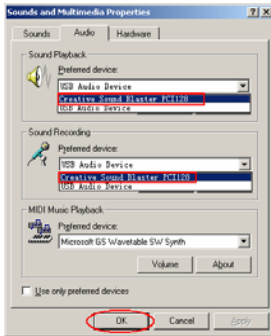
10 FAQ

Problem 1

I am not able to hear any sound through the headset?

Solution

Please execute the “Control Panel->Sound and Video (🔊)
->Audio”, set **Sound Playback** and **Sound Recording**'s preference device to your sound card. See below:



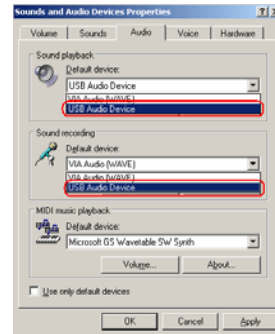
Problem 2

I can't play music through the USB Phone?

Solution

Please execute the “Control Panel->Sound and Video (🔊)
->Audio”, set **Sound Playback** and **Sound Recording**'s
preference device to “USB Audio Device”.

11

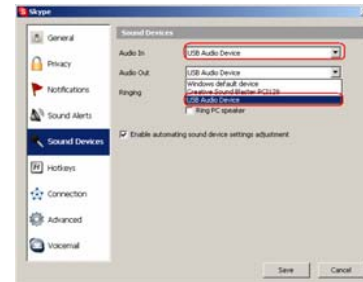


Problem 3

The voice is played from the PC's sound card instead of the
USB Skype Phone when I make/answer a call?

Solution

Execute “Tools->Options->Sound Devices” to open the
window as below:



12

Set “Audio In” and “Audio Out” to “USB Audio Device”.

Problem 4

Skype is running, but the icon of SkypeMate still show as



(the phone is green and the outside is grey)?

Solution

You have selected the wrong option, go to Skype, execute “Tools-> Options-> Privacy-> “Manage other programs’ access to Skype”, choose the needed option, click “Change” button to open the “Manage API Access Control” windows, and make another selection.